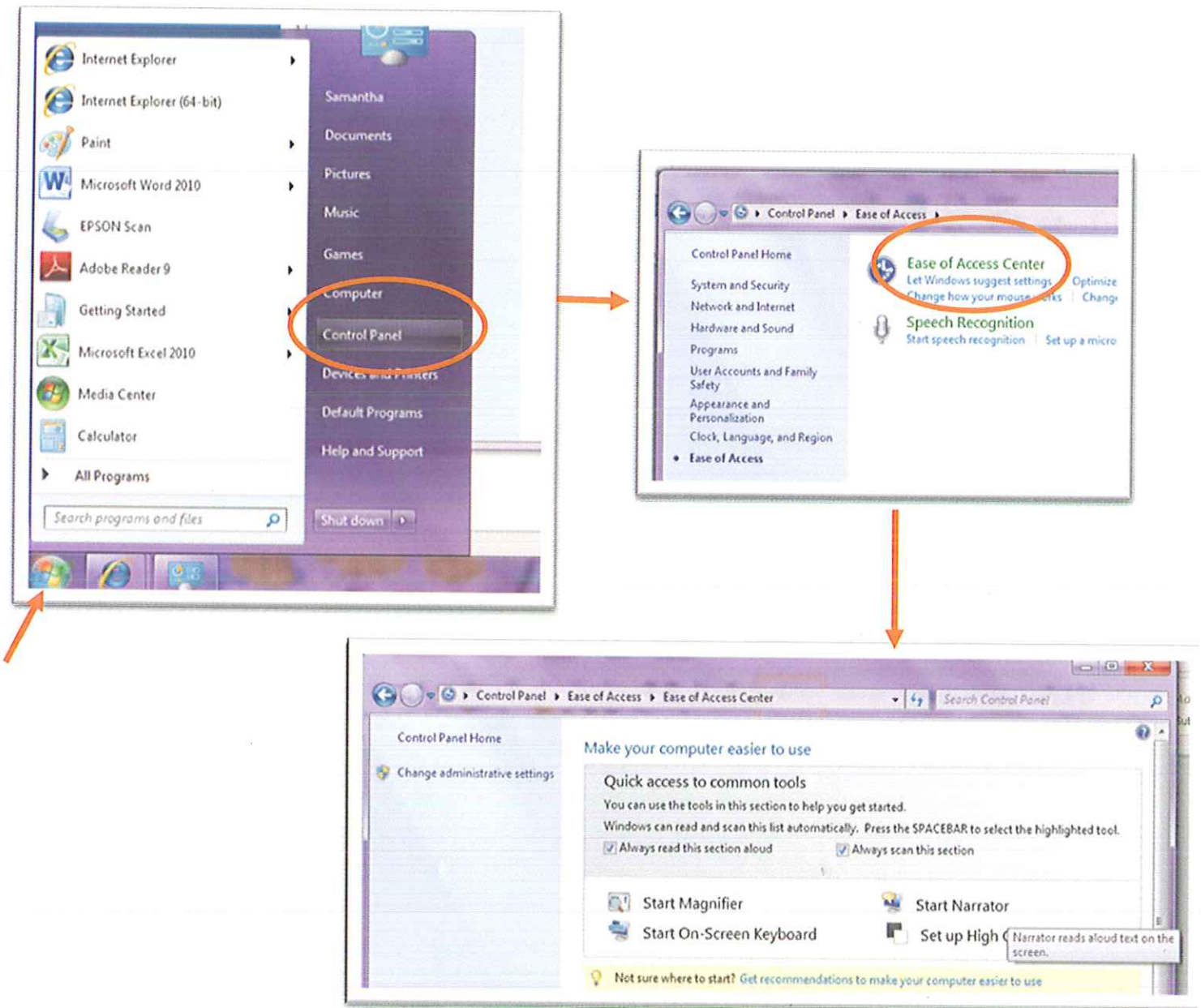


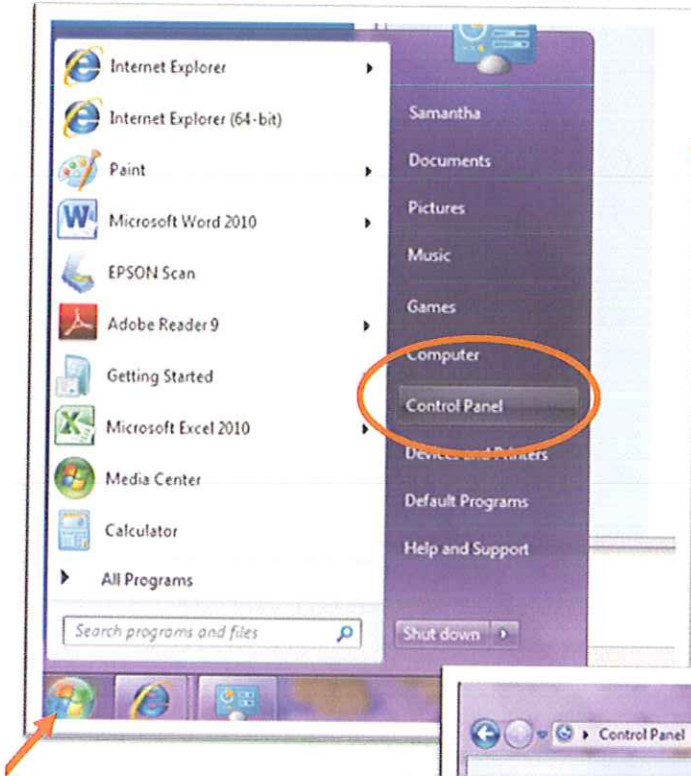
## Changing the settings in Microsoft

You can change the display and other facilities in Microsoft like using a magnifying glass or an onscreen keyboard, by going into the control panel section of the computer shown below. Basically **press the start button on the bottom left of the main screen, select Control Panel, then Ease of Access, then Ease of Access Centre, then select the facility you wish to use.**

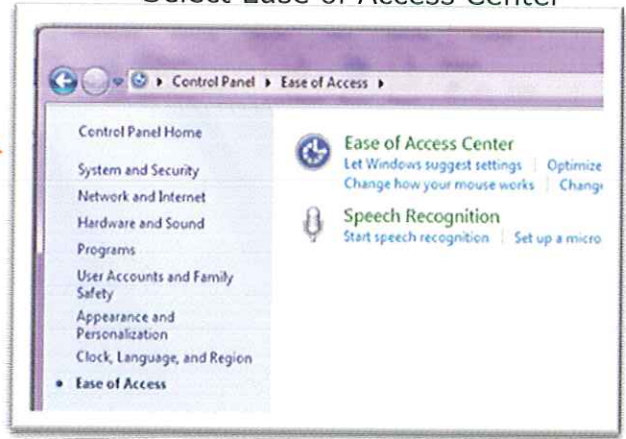


## Setting up the speech facility in Microsoft

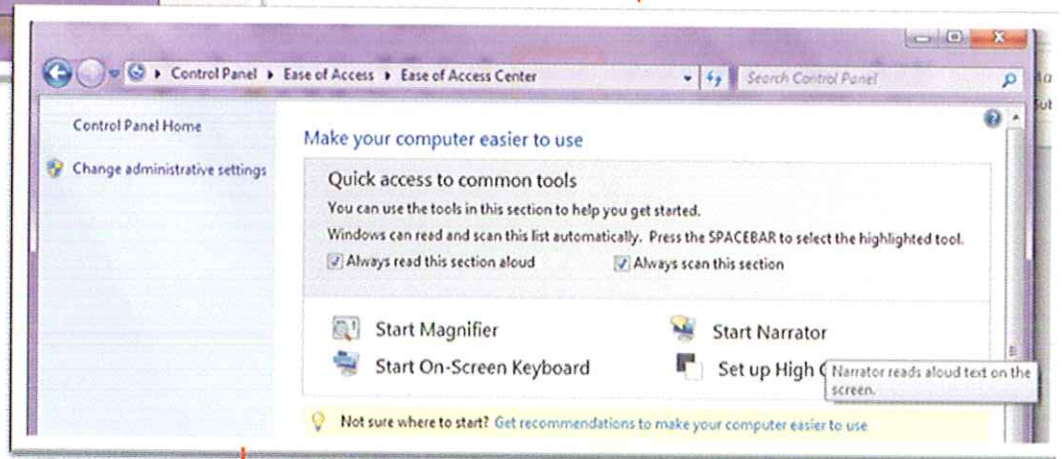
Go to Start, Control Panel



Select Ease of Access Center



Start Narrator



Adjust settings on here as required